

Peterborough Children's Services

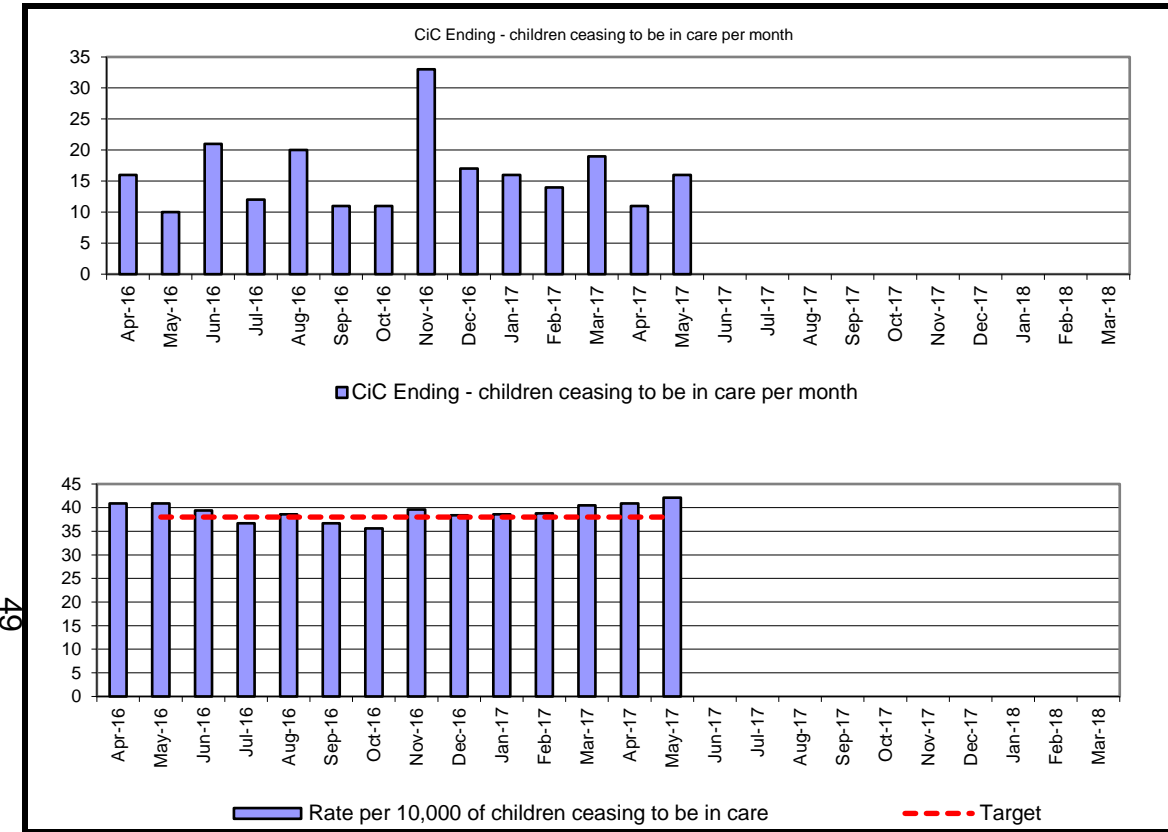
"Change together for children"



45

FINAL

Contents		Latest Published	SN Avg	ENG Avg	Target	Latest Data		Dir. of travel	Polarity	Page Number
						Actual	RAG			
Children in Care	Number of Children in Care per 10,000	74.0	79.4	60.0	74.0	75.9	A	↓	Smaller is better	24
	Admissions of Children in Care per 10,000	36.2	29.7	26.5	38.0	44.4	A	↑	-	25
	Number of Children who have ceased to be Children in Care per 10,000	32.9	30.1	26.5	38.0	42.1	A	↓	-	26
	Number of Children in Care				345	362	A	↑	Proximity to target	27
	Placement Stability: 3 or more placements during previous 12 months for CiC	8.5%	11.3%	11.0%	8.5%	5.8%	G	↑	Smaller is better	28
	Placement Stability: Length of Placement for Children in Care	73.0%	69.1%	67.0%	71.0%	67.2%	R	↑	Bigger is better	29
	Children in Care Reviews held within timescales	98.7%			100.0%	99.1%	A	↑	Bigger is better	30
	Children in care statutory visits in time				98.0%	96.8%	A	↑	Bigger is better	31
	Percentage of children adopted	19.0%	24.0%	17.0%	14.0%	0.0%	R	↓	Bigger is better	32
	Average days between child entering care and moving in with a adoptive family	593	616	628	487	499	G	=	Smaller is better	33
	Average days between court agreeing adoption and LA approving a match	242	211	217	120	441	A	=	Smaller is better	34
	Children in care - Missing from care					12		↑	-	35
	Initial health assessments completed within 20 working days of child entering care				95.0%	64.3%	R	↑	Bigger is better	36
	Health of Children in Care - Annual Health Assessments	93.9%	89.1%	88.4%	95.0%	89.0%	A	↑	Bigger is better	37
	Children in care (aged 3-17 years) with dental checks held within previous 12 months				95.0%	73.2%	R	↑	Bigger is better	38
	Personal Education Plans (PEPs)				98.0%	97.2%	A	↑	Bigger is better	39
	Leaving care cases with a pathway plan				98.0%	84.3%	R	↑	Bigger is better	40
Care leavers (+19 years) - Not in Education, Employment and Training				30.0%	31.3%	A	↓	Smaller is better	41	
Care leavers (+19 Years) - Not in Suitable Accommodation				5.0%	0.0%	G	↓	Smaller is better	42	
Profiles	Children in care; referrals starting in month									43 - 47



Month	CiC Ending -	12 Mths	children ceasing to be in care	Target	Variance	RAG
Apr-16	16	195	40.9	38.0	7.5%	R
May-16	10	195	40.9	38.0	7.5%	R
Jun-16	21	188	39.4	38.0	3.7%	R
Jul-16	12	175	36.7	38.0	-3.5%	R
Aug-16	20	184	38.6	38.0	1.5%	R
Sep-16	11	175	36.7	38.0	-3.5%	R
Oct-16	11	170	35.6	38.0	-6.2%	G
Nov-16	33	189	39.6	38.0	4.2%	A
Dec-16	17	183	38.4	38.0	0.9%	A
Jan-17	16	184	38.6	38.0	1.5%	A
Feb-17	14	185	38.8	38.0	2.0%	A
Mar-17	19	193	40.4	38.0	6.4%	A
Apr-17	11	195	40.9	38.0	7.5%	A
May-17	16	201	42.1	38.0	10.9%	A
Jun-17						
Jul-17						
Aug-17						
Sep-17						
Oct-17						
Nov-17						
Dec-17						
Jan-18						
Feb-18						
Mar-18						

CSC Commentary

16 children ceased to be accommodated in May. This was a combination of young people reaching 18, children being adopted, and moving onto SGOs where appropriate. CiC is working currently to close cases in a more timely manner but internal processes such as the 'later life letter' and the adoption ceremony mean for children who are adopted that these cases may take longer to close.

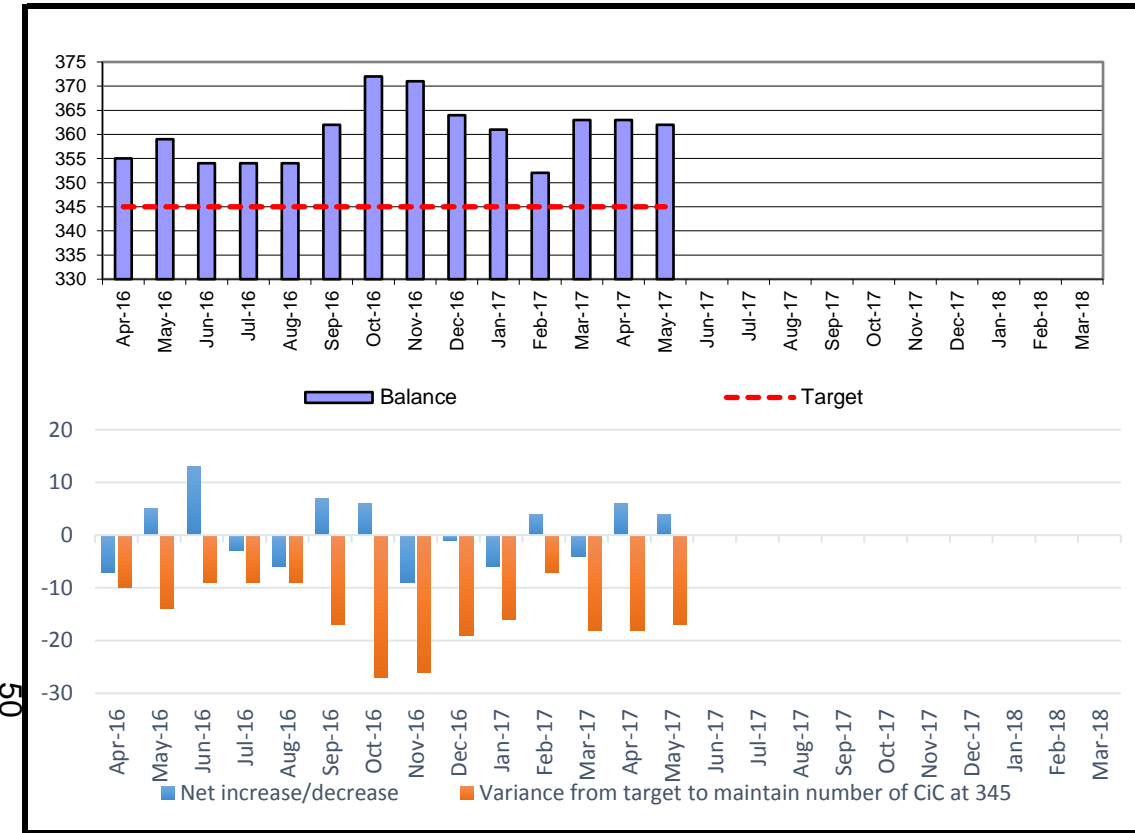
Definition

Number of children who ceased to be in care (rolling 12 months) divided by the population of 0-17 year olds in Peterborough multiplied by 10,000. If a child ceased to be in care on more than one occasion then each time is counted in this indicator.

Population for denominator: 47715

G = G = A > R <

Year	PCC Result	SN Result	ENG Result
2013-14	32.9	30.1	26.5
2015-15	35.4	32.3	26.8
2015-16	38.8	32.3	27.2



Month	CiC Start	CiC End	Net i	Balance	Target	Variance	RAG
Apr-16	9	16	-7	355	345.0	-10	A
May-16	15	10	5	359	345.0	-14	A
Jun-16	34	21	13	354	345.0	-9	A
Jul-16	9	12	-3	354	345.0	-9	A
Aug-16	14	20	-6	354	345.0	-9	A
Sep-16	18	11	7	362	345.0	-17	A
Oct-16	17	11	6	372	345.0	-27	A
Nov-16	24	33	-9	371	345.0	-26	A
Dec-16	16	17	-1	364	345.0	-19	A
Jan-17	10	16	-6	361	345.0	-16	A
Feb-17	18	14	4	352	345.0	-7	A
Mar-17	15	19	-4	363	345.0	-18	A
Apr-17	17	11	6	363	345.0	-18	A
May-17	20	16	4	362	345.0	-17	A
Jun-17							
Jul-17							
Aug-17							
Sep-17							
Oct-17							
Nov-17							
Dec-17							
Jan-18							
Feb-18							
Mar-18							

CSC Commentary

The net change in the number of children remains static for May. The variance of number of children per 10,000 being in care is 345 and the current numbers are 362. The variance being 17.

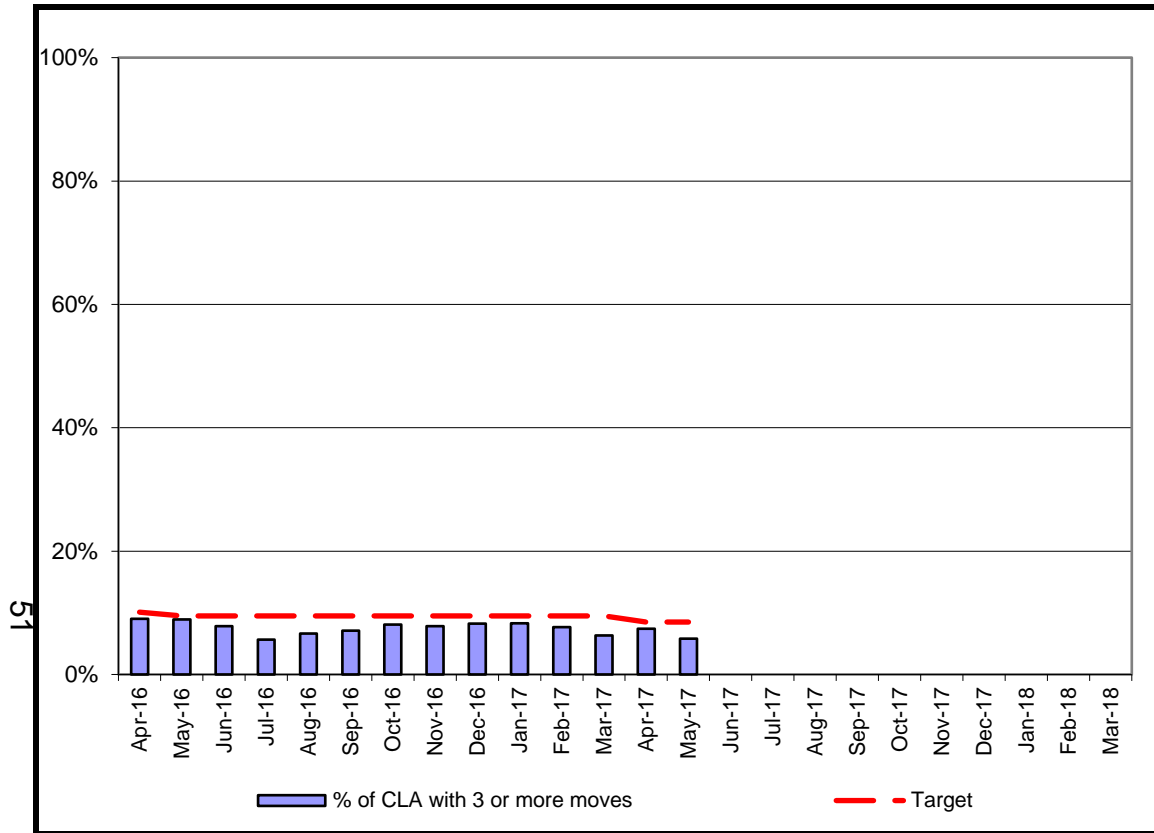
Definition

Net change in the number of children in care

Population for denominator: 46600

G = 345 **A = +/-20** **R = +/-30**

Year	PCC Result	SN Result	ENG Result
2013-14	55.7	64.7	52.1
2014-15			
2016-17			



Month	Num.	Denom.	% of CLA with	Target	Variance	RAG
Apr-16	32	354	9.0%	10.1%	-1.1	G
May-16	32	358	8.9%	9.5%	-0.6	G
Jun-16	29	371	7.8%	9.5%	-1.7	G
Jul-16	21	371	5.7%	9.5%	-3.8	G
Aug-16	24	362	6.6%	9.5%	-2.9	A
Sep-16	26	366	7.1%	9.5%	-2.4	A
Oct-16	30	372	8.1%	9.5%	-1.4	G
Nov-16	29	371	7.8%	9.5%	-1.7	G
Dec-16	30	364	8.2%	9.5%	-1.3	G
Jan-17	30	361	8.3%	9.5%	-1.2	G
Feb-17	27	352	7.7%	9.5%	-1.8	G
Mar-17	23	363	6.3%	9.5%	-3.2	G
Apr-17	27	363	7.4%	8.5%	-1.1	G
May-17	21	362	5.8%	8.5%	-2.7	G
Jun-17						
Jul-17						
Aug-17						
Sep-17						
Oct-17						
Nov-17						
Dec-17						
Jan-18						
Feb-18						
Mar-18						

CSC Commentary

Placement stability for May remains in green. Real time figures indicated a slight improvement on the previous month in relation to placement stability by month end enabling the target to remain as green. Review of factors impacting on the indicator are currently being analysed in CIC to improve and sustain placement stability. These include reviewing contact arrangements, revisiting 'core business' requirements within CIC, and working in partnership with TACT to identify need and gaps in service provision.

Definition

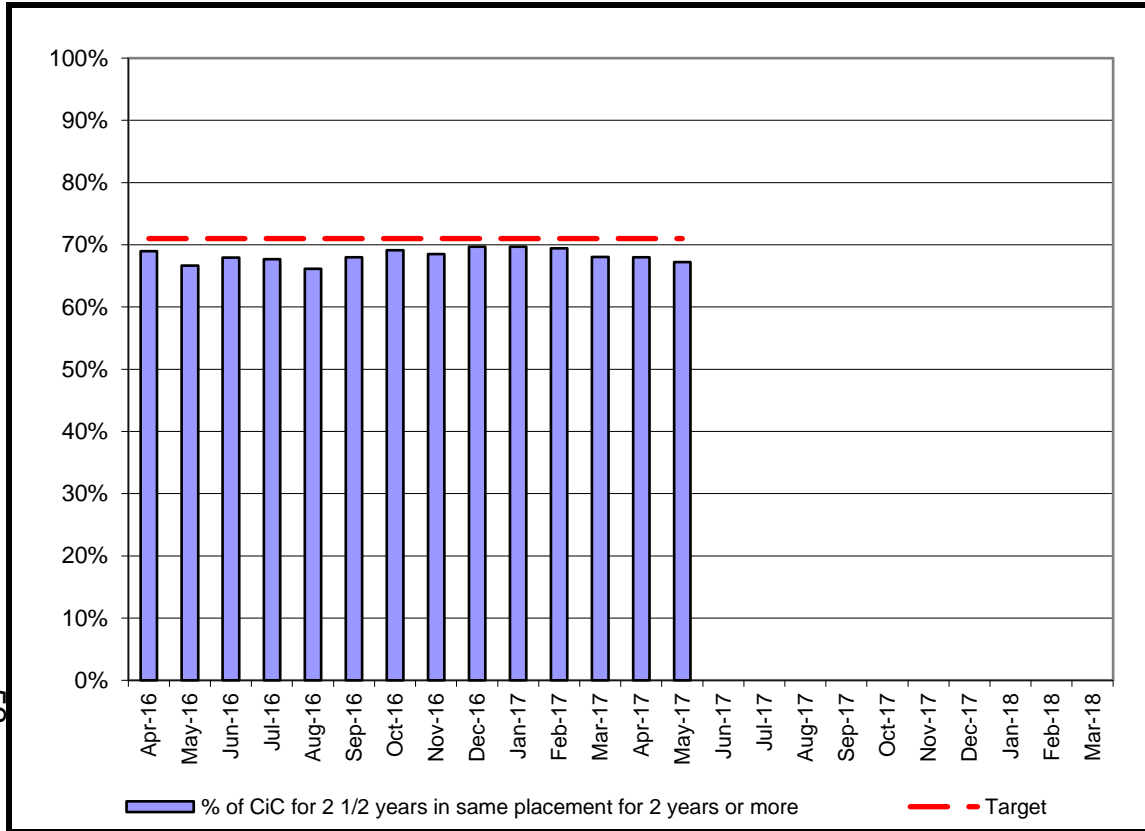
The percentage of children in care at any given time with three or more placements during the last 12 months.

Population for denominator: 46600

G <= 8.5%	A > 8.6-10%	R >10
-----------	-------------	-------

Year	PCC Result	SN Result	ENG Result
2013-14	9.0%	11.3%	11.0%
2014-15	8.5%		
2015-16			

52



Month	Num.	Denom.	% of CiC	Target	Variance	RAG
Apr-16	89	129	69.0%	71.0%	-2.0	R
May-16	86	129	66.7%	71.0%	-4.3	R
Jun-16	89	131	67.9%	71.0%	-3.1	R
Jul-16	88	130	67.7%	71.0%	-3.3	R
Aug-16	86	130	66.2%	71.0%	-4.8	R
Sep-16	85	125	68.0%	71.0%	-3.0	R
Oct-16	85	123	69.1%	71.0%	-1.9	A
Nov-16	87	127	68.5%	71.0%	-2.5	R
Dec-16	85	122	69.7%	71.0%	-1.3	A
Jan-17	85	122	69.7%	71.0%	-1.3	A
Feb-17	84	121	69.4%	71.0%	-1.6	A
Mar-17	83	122	68.0%	71.0%	-3.0	R
Apr-17	85	125	68.0%	71.0%	-3.0	R
May-17	82	122	67.2%	71.0%	-3.8	R
Jun-17						
Jul-17						
Aug-17						
Sep-17						
Oct-17						
Nov-17						
Dec-17						
Jan-18						
Feb-18						
Mar-18						

CSC Commentary

Placement stability for the month of May continues to see a decrease in performance on the previous month; the target is 71% and the last 2 months have seen a move away from this. Factors impacting on the indicator are currently being analysed in CIC to improve and sustain placement stability. These include reviewing contact arrangements, revisiting 'core business' requirements within CIC, working in partnership with TACT to identify need and gaps in service provision, and building resilience in foster carers through training and development.

Definition

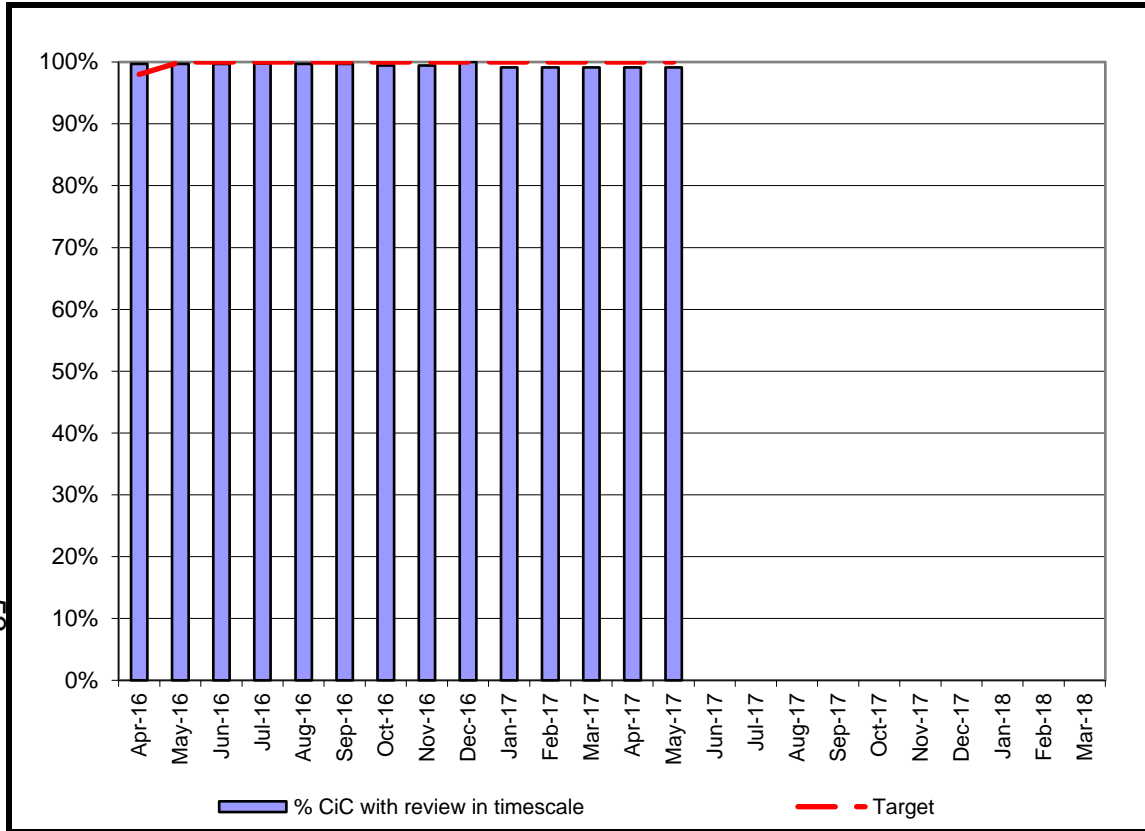
The percentage of children in care aged under 16 who had been in care continuously for at least 2.5 years who were living in the same placement for at least 2 years, or are placed for adoption and their adoptive placement together with their previous placement together last for at least 2 years.

Population for denominator: 46600



Year	PCC Result	SN Result	ENG Result
2013-14	73.0%	69.1%	67.0%
2014-15			
2015-16			

53



Month	Num.	Denom.	% CiC
Apr-16	347	348	99.7%
May-16	350	351	99.7%
Jun-16	347	348	99.7%
Jul-16	365	366	99.7%
Aug-16	355	356	99.7%
Sep-16	353	354	99.7%
Oct-16	360	362	99.4%
Nov-16	352	354	99.4%
Dec-16	358	358	100.0%
Jan-17	352	355	99.2%
Feb-17	349	352	99.1%
Mar-17	351	354	99.2%
Apr-17	349	352	99.1%
May-17	343	346	99.1%
Jun-17			
Jul-17			
Aug-17			
Sep-17			
Oct-17			
Nov-17			
Dec-17			
Jan-18			
Feb-18			
Mar-18			

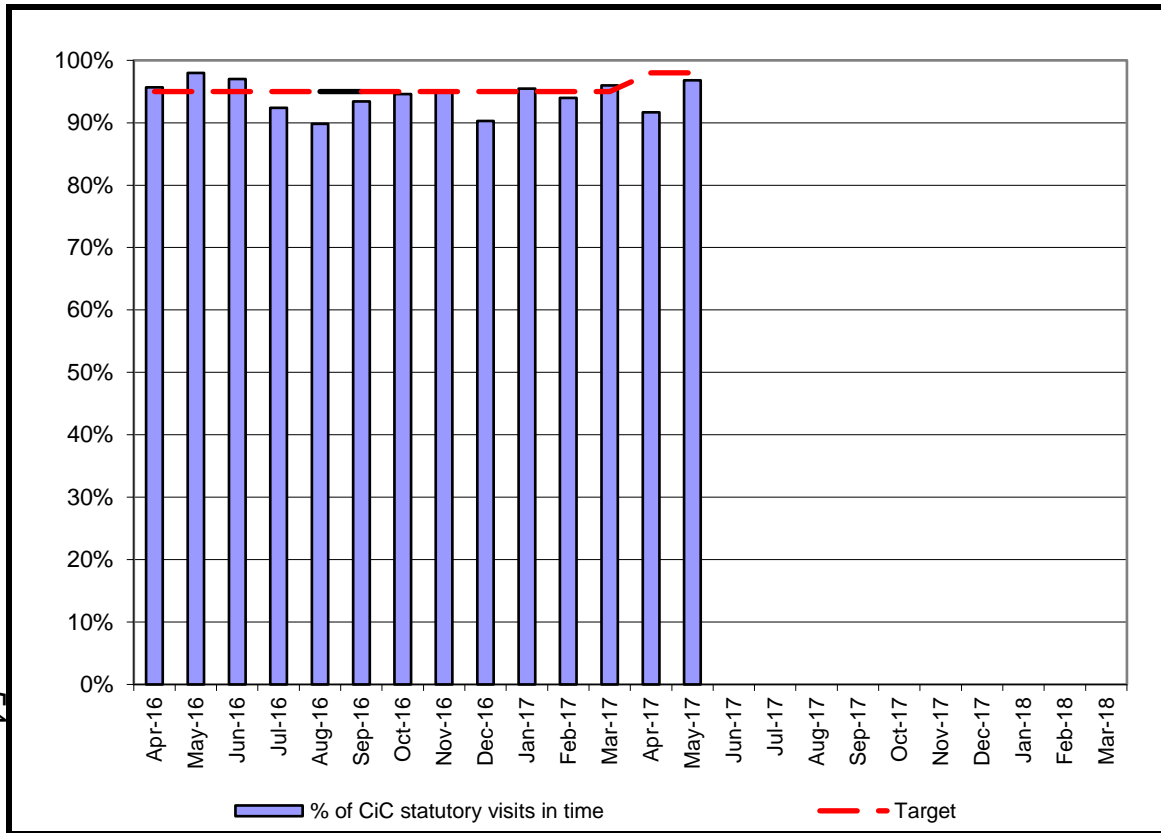
Target	Variance	RAG
98.0%	1.7	A
100.0%	-0.3	A
100.0%	-0.3	A
100.0%	-0.3	A
100.0%	-0.3	A
100.0%	-0.3	A
100.0%	-0.6	A
100.0%	-0.6	A
100.0%	0.0	G
100.0%	-0.8	A
100.0%	-0.9	A
100.0%	-0.8	A
100.0%	-0.9	A
100.0%	-0.9	A

CSC Commentary
 May data for CIC reviews saw a return to 99.1% for the completion of CCRs on time. This target is calculated on a rolling year and when analysed recently with the QA service relates to a review that did not occur in January. The impact will continue for the rest of the year.

Definition
 The percentage of Looked after children for at least one month, whose case was reviewed within the required timescales.
 The denominator is children who are LAC for at least one month at the end of the reporting month. The numerator is the number of children who have not had a review in the last 12 months recorded as outside of timescale.

G = 100% **A > 98%** **R < 98%**

54



Month	Num.	Denom.	% of
Apr-16	333	348	95.7%
May-16	339	346	98.0%
Jun-16	327	337	97.0%
Jul-16	327	354	92.4%
Aug-16	317	353	89.8%
Sep-16	325	348	93.4%
Oct-16	333	352	94.6%
Nov-16	332	349	95.1%
Dec-16	316	350	90.3%
Jan-17	336	352	95.5%
Feb-17	327	348	94.0%
Mar-17	334	348	96.0%
Apr-17	320	349	91.7%
May-17	334	345	96.8%
Jun-17			
Jul-17			
Aug-17			
Sep-17			
Oct-17			
Nov-17			
Dec-17			
Jan-18			
Feb-18			
Mar-18			

Target	Variance	RAG
95.0%	0.7	A
95.0%	3.0	R
95.0%	2.0	G
95.0%	-2.6	A
95.0%	-5.2	A
95.0%	-1.6	G
95.0%	-0.4	A
95.0%	0.1	R
95.0%	-4.7	R
95.0%	0.5	R
95.0%	-1.0	G
95.0%	1.0	G
98.0%	-6.3	A
98.0%	-1.2	A

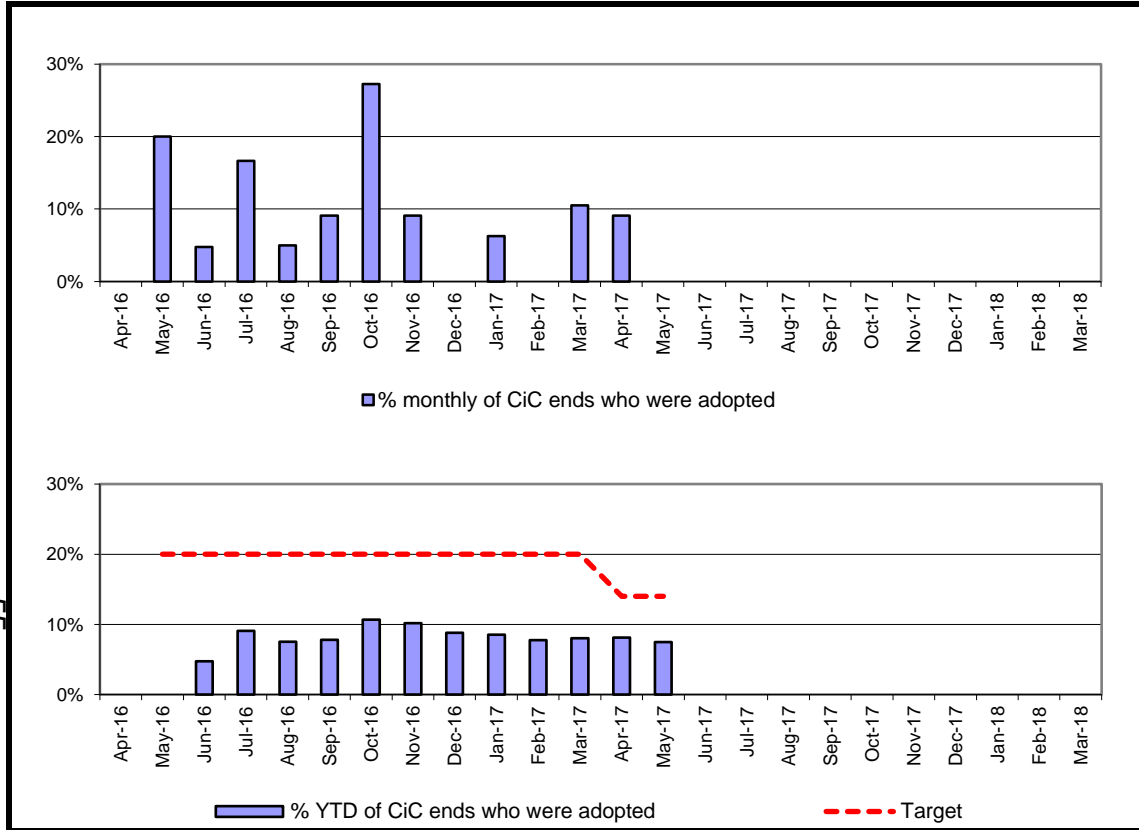
CSC Commentary

This indicator has seen an improvement on the previous month with the variance being -1.2 and the overall figure being 96.8% in May. Last month's decrease in this target have been analysed and the CiC management team have a renewed emphasis on stat visits occurring in time, being recorded as per the case recording policy. Patterns and themes are being assessed for the end of Qtr 1.

Definition

Of all Children in Care that have been looked after for more than 6 weeks, the number and percentage of visits that were completed within the 6 week deadline (or within three months for those Children in Care that have been looked after for more than 12 months and whose placement is deemed to be permanent). This is snapshot data taken at the month end.

G = 98% **A > 97%-90** **R < 90%**



Month	Adop.	CiC Ends	% monthly	% YTD	Target	Var	RAG
Apr-16	0	16	0.0%	0.0%	20.0%	-20.0	A
May-16	2	10	20.0%	0.0%	20.0%	-20.0	G
Jun-16	1	21	4.8%	4.8%	20.0%	-15.2	R
Jul-16	2	12	16.7%	9.1%	20.0%	-10.9	G
Aug-16	1	20	5.0%	7.5%	20.0%	-12.5	R
Sep-16	1	11	9.1%	7.8%	20.0%	-12.2	A
Oct-16	3	11	27.3%	10.7%	20.0%	-9.3	A
Nov-16	3	33	9.1%	10.2%	20.0%	-9.8	A
Dec-16	0	17	0.0%	8.8%	20.0%	-11.2	R
Jan-17	1	16	6.3%	8.5%	20.0%	-11.5	R
Feb-17	0	14	0.0%	7.7%	20.0%	-12.3	R
Mar-17	2	19	10.5%	8.0%	20.0%	-12.0	R
Apr-17	1	11	9.1%	8.1%	14.0%	-5.9	R
May-17	0	16	0.0%	7.5%	14.0%	-6.5	R
Jun-17							
Jul-17							
Aug-17							
Sep-17							
Oct-17							
Nov-17							
Dec-17							
Jan-18							
Feb-18							
Mar-18							

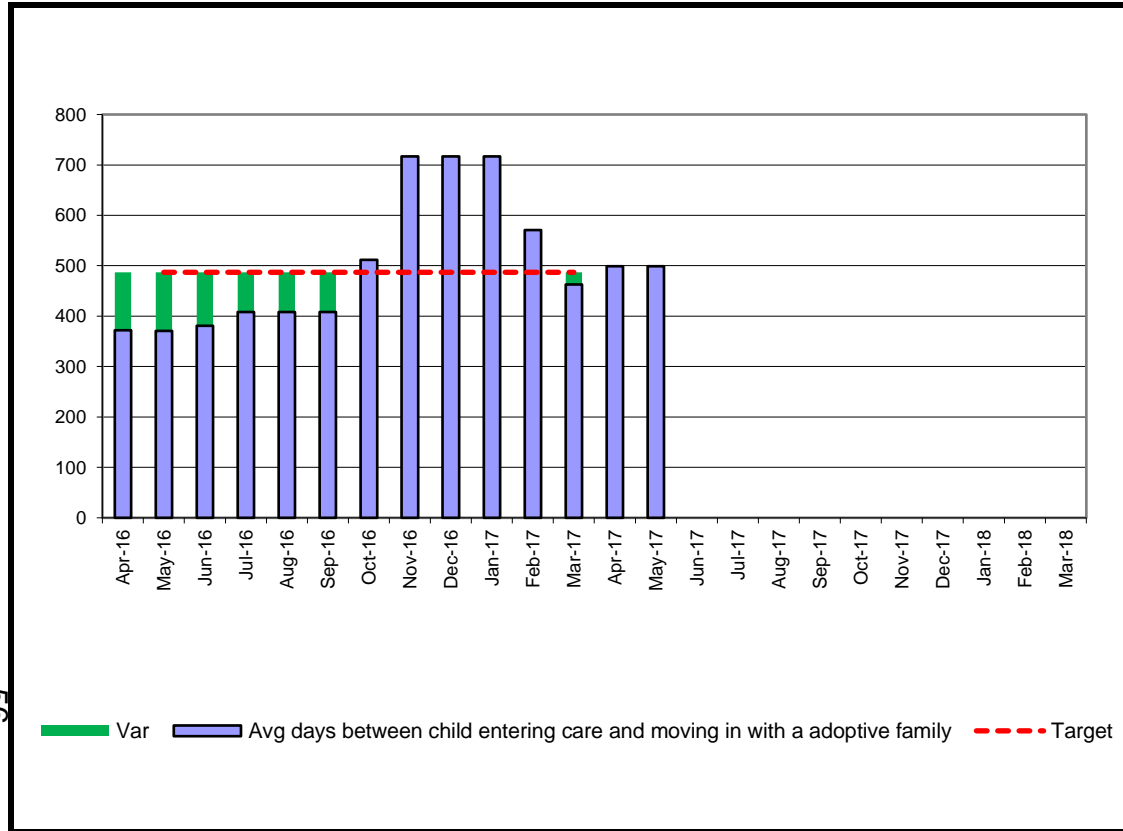
YTD:	1	27	--	3.7%	20.0%	-16.3	R
-------------	----------	-----------	-----------	-------------	--------------	--------------	----------

CSC Commentary
 This commentary is now updated on a quarterly basis.

Definition
 The number of children adopted as a percentage of the number of children who ceased to be in care

G =14% **A 9-13%** **R< 8%**

Year	PCC Result	SN Result	ENG Result
2013-14	18.0%	22.4%	17.0%
2014-15	19.0%	24.0%	17.0%
2015-16	17.0%	21.0%	15.0%



Month	Avg days
Apr-16	372
May-16	371
Jun-16	381
Jul-16	408
Aug-16	408
Sep-16	408
Oct-16	512
Nov-16	717
Dec-16	717
Jan-17	717
Feb-17	571
Mar-17	463
Apr-17	499
May-17	499
Jun-17	
Jul-17	
Aug-17	
Sep-17	
Oct-17	
Nov-17	
Dec-17	
Jan-18	
Feb-18	
Mar-18	

Target	Var	RAG
487.0	-115	
487.0	-116	
487.0	-106	
487.0	-79	
487.0	-79	G
487.0	-79	G
487.0	25	G
487.0	230	G
487.0	230	G
487.0	230	G
487.0	84	G
487.0	-24	G
	499	G
	499	G
		G
		G
		G
		G
		R
		R
		R
		R
		R
		R
		R
		G

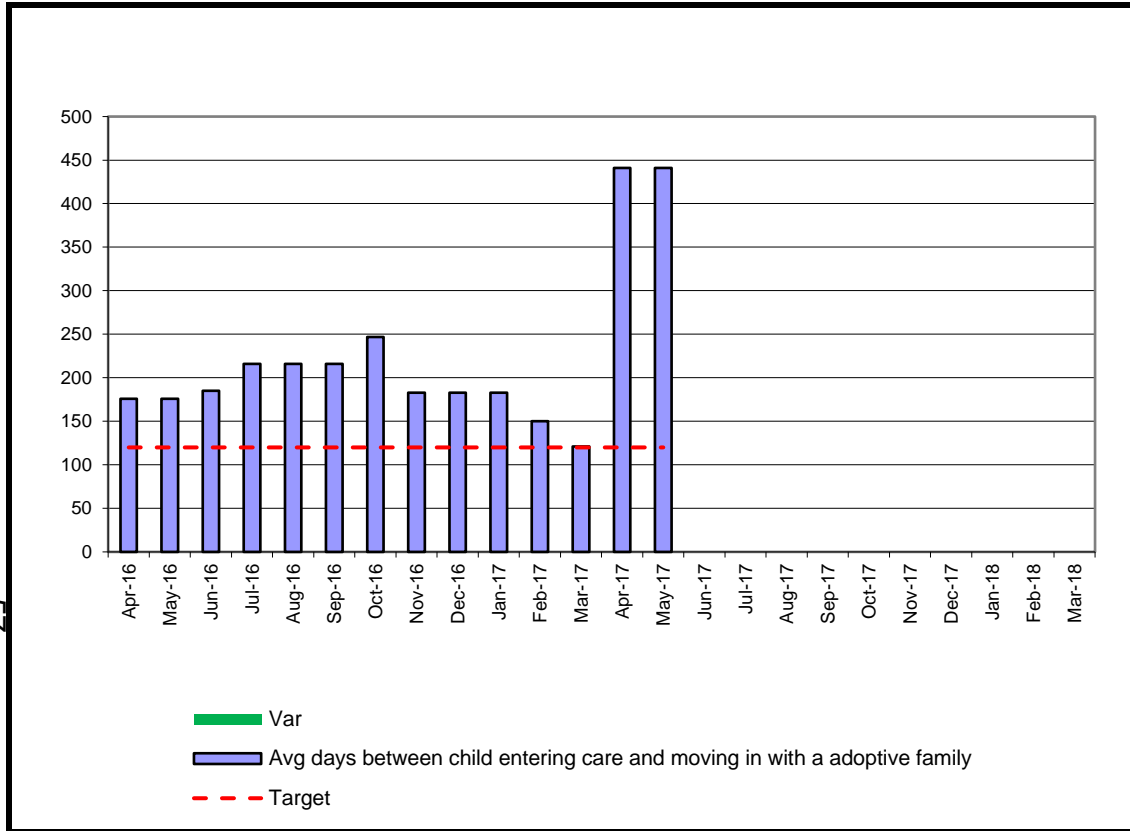
CSC Commentary
 This commentary is now updated on a quarterly basis.

Definition:
 The average days between child entering care and moving in with a adoptive family and the average days between court agreeing adoption and LA approving a match. The monthly figures represent the cumulative total for the year to date.

G <=487 A > R

Year	ER Result	ENG Result
2013-14		
2014-15	492.5	
2015-16		

57



Month	Avg days
Apr-16	176
May-16	176
Jun-16	185
Jul-16	216
Aug-16	216
Sep-16	216
Oct-16	247
Nov-16	183
Dec-16	183
Jan-17	183
Feb-17	150
Mar-17	121
Apr-17	441
May-17	441
Jun-17	
Jul-17	
Aug-17	
Sep-17	
Oct-17	
Nov-17	
Dec-17	
Jan-18	
Feb-18	
Mar-18	

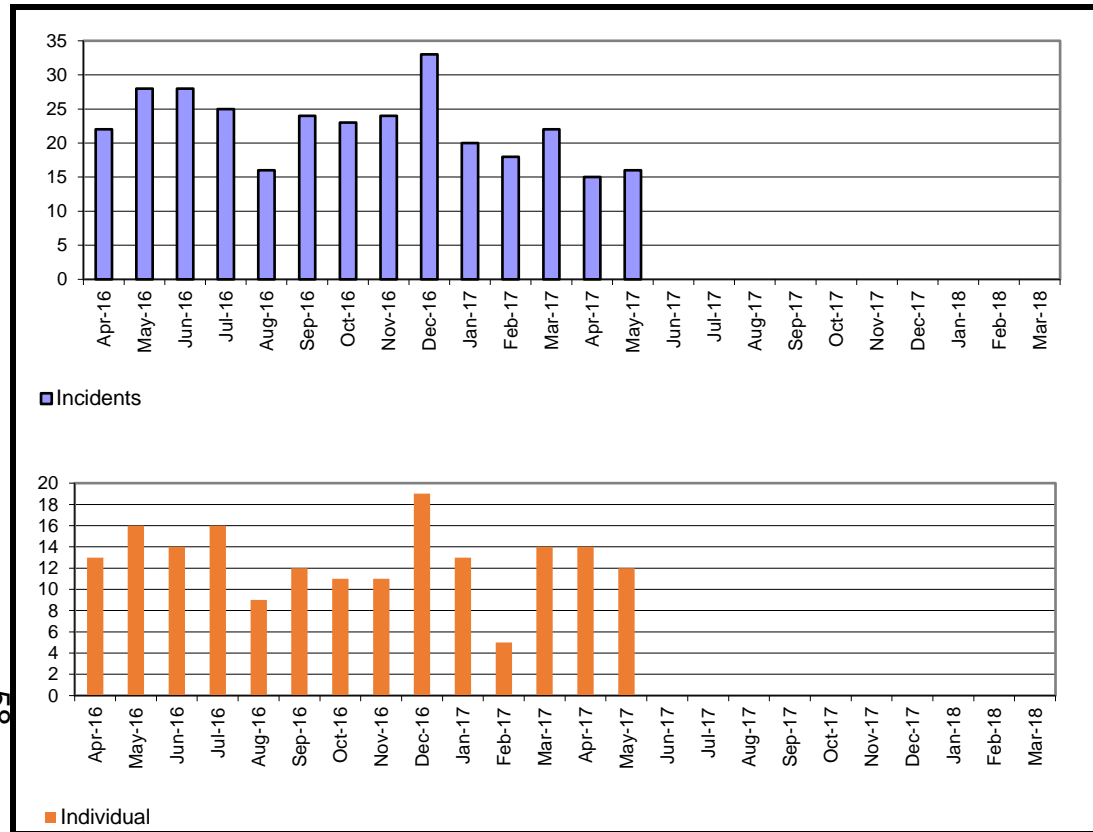
Target	Var	RAG
120.0	56.0	
120.0	56.0	
120.0	65.0	
120.0	96.0	
120.0	96.0	
120.0	96.0	
120.0	127.0	
120.0	63.0	
120.0	63.0	
120.0	63.0	
120.0	30.0	
120.0	1.0	
120.0	321.0	R
120.0	321.0	R

This commentary is now updated on a quarterly basis.

Definition
 The average days between child entering care and moving in with a adoptive family and the average days between court agreeing adoption and LA approving a match. The monthly figures represent the cumulative total for the

G <=120 **A** > **R** <

Year	PCC Result	ER Result	ENG Result
2013-14			
2014-15	304.0	220.0	
2015-16			



Month	Incidents	Individual
Apr-16	22	13
May-16	28	16
Jun-16	28	14
Jul-16	25	16
Aug-16	16	9
Sep-16	24	12
Oct-16	23	11
Nov-16	24	11
Dec-16	33	19
Jan-17	20	13
Feb-17	18	5
Mar-17	22	14
Apr-17	15	14
May-17	16	12
Jun-17		
Jul-17		
Aug-17		
Sep-17		
Oct-17		
Nov-17		
Dec-17		
Jan-18		
Feb-18		
Mar-18		

89

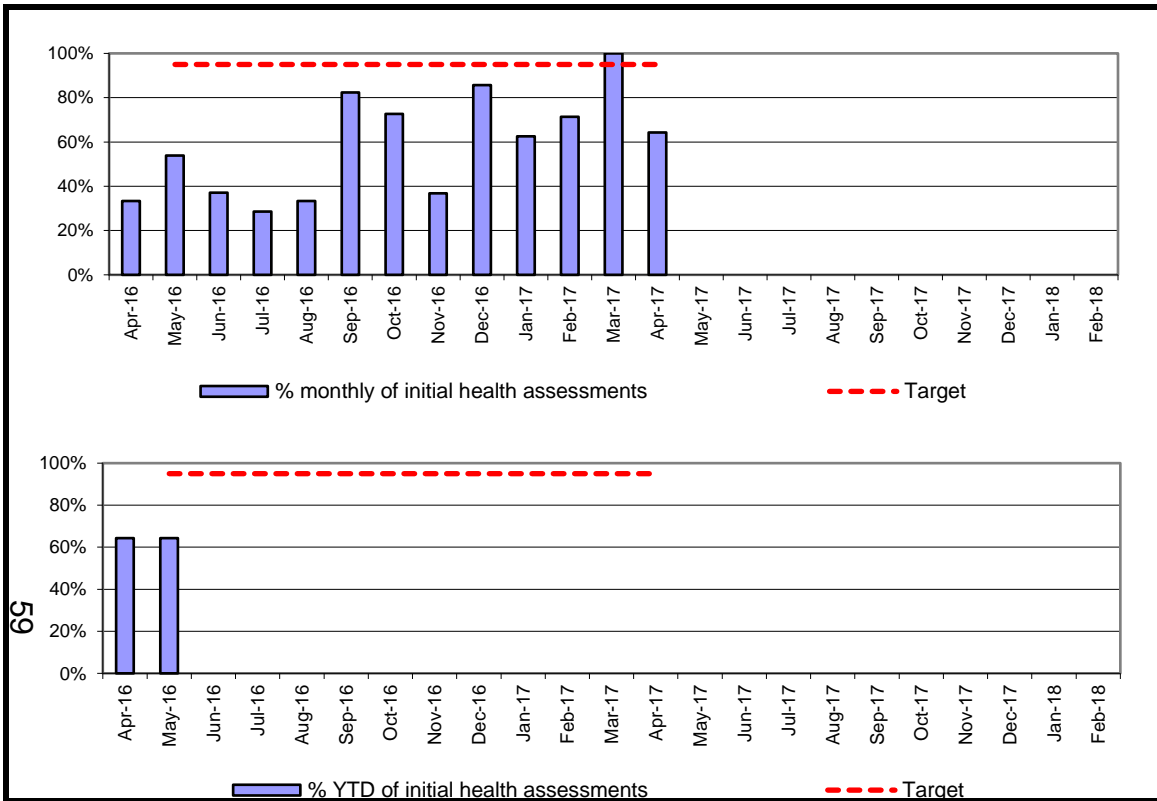
CSC Commentary

May data indicates a positive decrease in individuals going missing, although this month has seen a slight increase in the incidents recorded. Patterns and themes were analysed and indicate that for some children the missing episodes link to placement stability, or instability.

Definition

All missing incidents (including incidents occurring to CiC placed outside of Peterborough) for Children in Care recorded in the month; individuals is the number of children this involves (as some children may go missing more than once).





Month	Init.HA	CiC St	%	% YTD	Target	Var	RAG
Apr-16	3	9	33.3%	64.3%	95.0%	-30.7	
May-16	7	13	53.8%	64.3%	95.0%	-30.7	
Jun-16	10	27	37.0%	#DIV/0!	95.0%	#DIV/0!	
Jul-16	2	7	28.6%	#DIV/0!	95.0%	#DIV/0!	
Aug-16	4	12	33.3%	#DIV/0!	95.0%	#DIV/0!	
Sep-16	14	17	82.4%	#DIV/0!	95.0%	#DIV/0!	
Oct-16	8	11	72.7%	#DIV/0!	95.0%	#DIV/0!	
Nov-16	7	19	36.8%	#DIV/0!	95.0%	#DIV/0!	
Dec-16	6	7	85.7%	#DIV/0!	95.0%	#DIV/0!	
Jan-17	5	8	62.5%	#DIV/0!	95.0%	#DIV/0!	
Feb-17	10	14	71.4%	#DIV/0!	95.0%	#DIV/0!	
Mar-17	2	2	100.0%	#DIV/0!	95.0%	#DIV/0!	
Apr-17	9	14	64.3%	0.0%	95.0%	-95.0	R
May-17							
Jun-17							
Jul-17							
Aug-17							
Sep-17							
Oct-17							
Nov-17							
Dec-17							
Jan-18							
Feb-18							
Mar-18							
YTD:	11	16	--	68.8%	95.0%	-26.3	R

CSC Commentary

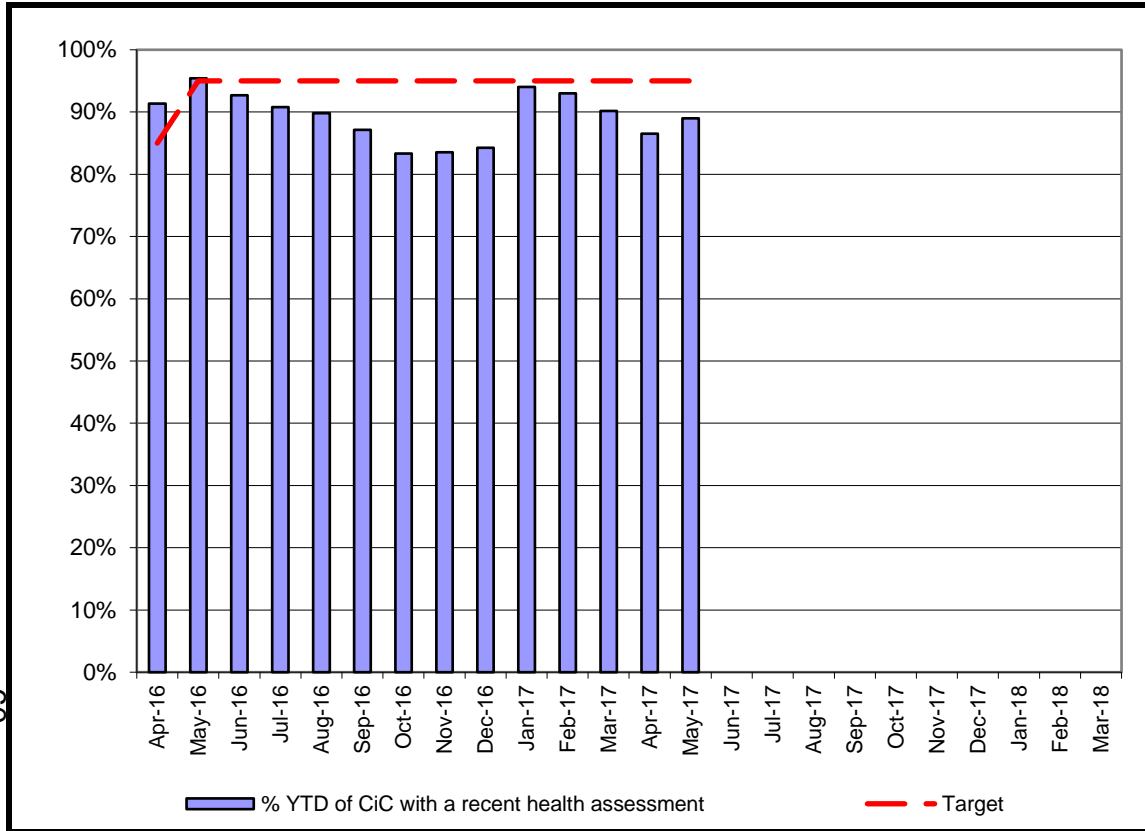
There were 20 referrals for an IHA in May; 1 didn't require an assessment; 10 were seen within timescale; 5 offered appointments within timescale; 2 were late as carer unable to take to appointment within timescale and 2 others were late due to clinic slots being full. May was a particularly busy busy month for the clinic.

Definition

The number of children becoming looked after that have an initial health assessment recorded within 20 working days of the child entering care. The number of children is measured one month in arrears to enable time for the 20 day period to elapse and excludes cases where the episode of care was closed within 20 days and also children entering care because they have been placed on remand (because the remand institution is responsible for completing the initial health assessment).

G >= 95% **A > 85 -95%** **R < 85%**

09



Month	Num.	Denom.	% YTD	Target	Variance	RAG
Apr-16	211	231	91.3%	85.0%	6.3	A
May-16	230	241	95.4%	95.0%	0.4	A
Jun-16	215	232	92.7%	95.0%	-2.3	A
Jul-16	207	228	90.8%	95.0%	-4.2	A
Aug-16	211	235	89.8%	95.0%	-5.2	A
Sep-16	210	241	87.1%	95.0%	-7.9	A
Oct-16	200	240	83.3%	95.0%	-11.7	A
Nov-16	203	243	83.5%	95.0%	-11.5	A
Dec-16	203	241	84.2%	95.0%	-10.8	A
Jan-17	236	251	94.0%	95.0%	-1.0	A
Feb-17	240	258	93.0%	95.0%	-2.0	A
Mar-17	238	264	90.2%	95.0%	-4.8	A
Apr-17	225	260	86.5%	95.0%	-8.5	A
May-17	234	263	89.0%	95.0%	-6.0	A
Jun-17						
Jul-17						
Aug-17						
Sep-17						
Oct-17						
Nov-17						
Dec-17						
Jan-18						
Feb-18						
Mar-18						

CSC Commentary

Performance for this target has improved in the last month by 9. However, underlying factors remain that continue to affect this indicator with regard to a significant number of teenagers refusing to engage in the process.

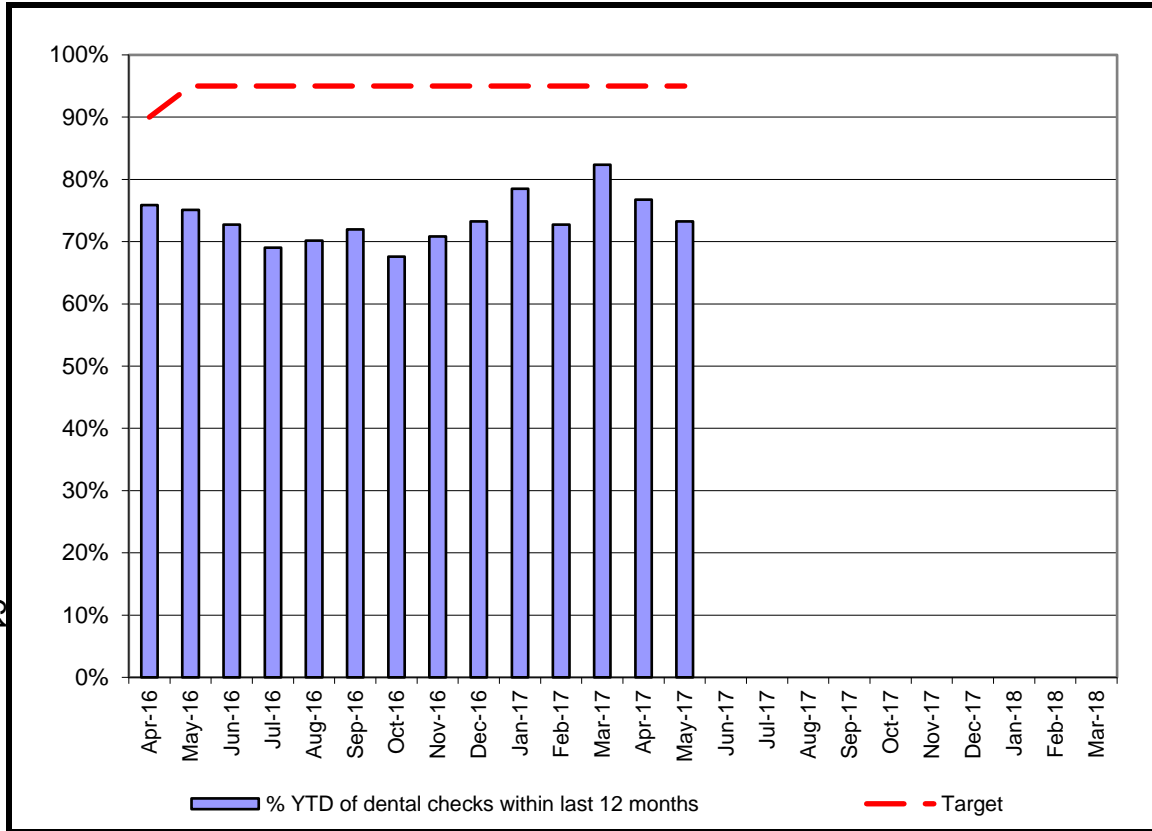
Definition

Of the children who had been in care for at least 12 months the proportion who had an annual health assessment during the previous 12 months.

G >= 95%	A > 85%	R < 85%
----------	---------	---------

Year	PCC Result	SN Result	ENG Result
2013-14	93.9%	89.1%	88.4%
2014-15			
2015-16			

61



Month	Num.	Denom.	% YTD	Target	Variance	RAG
Apr-16	239	315	75.9%	90.0%	-14.1	R
May-16	235	313	75.1%	95.0%	-19.9	R
Jun-16	235	323	72.8%	95.0%	-22.2	R
Jul-16	223	323	69.0%	95.0%	-26.0	R
Aug-16	221	315	70.2%	95.0%	-24.8	R
Sep-16	226	314	72.0%	95.0%	-23.0	R
Oct-16	215	318	67.6%	95.0%	-27.4	R
Nov-16	226	319	70.8%	95.0%	-24.2	R
Dec-16	238	325	73.2%	95.0%	-21.8	R
Jan-17	252	321	78.5%	95.0%	-16.5	R
Feb-17	240	330	72.7%	95.0%	-22.3	R
Mar-17	271	329	82.4%	95.0%	-12.6	R
Apr-17	251	327	76.8%	95.0%	-18.2	R
May-17	238	325	73.2%	95.0%	-21.8	R
Jun-17						
Jul-17						
Aug-17						
Sep-17						
Oct-17						
Nov-17						
Dec-17						
Jan-18						
Feb-18						
Mar-18						

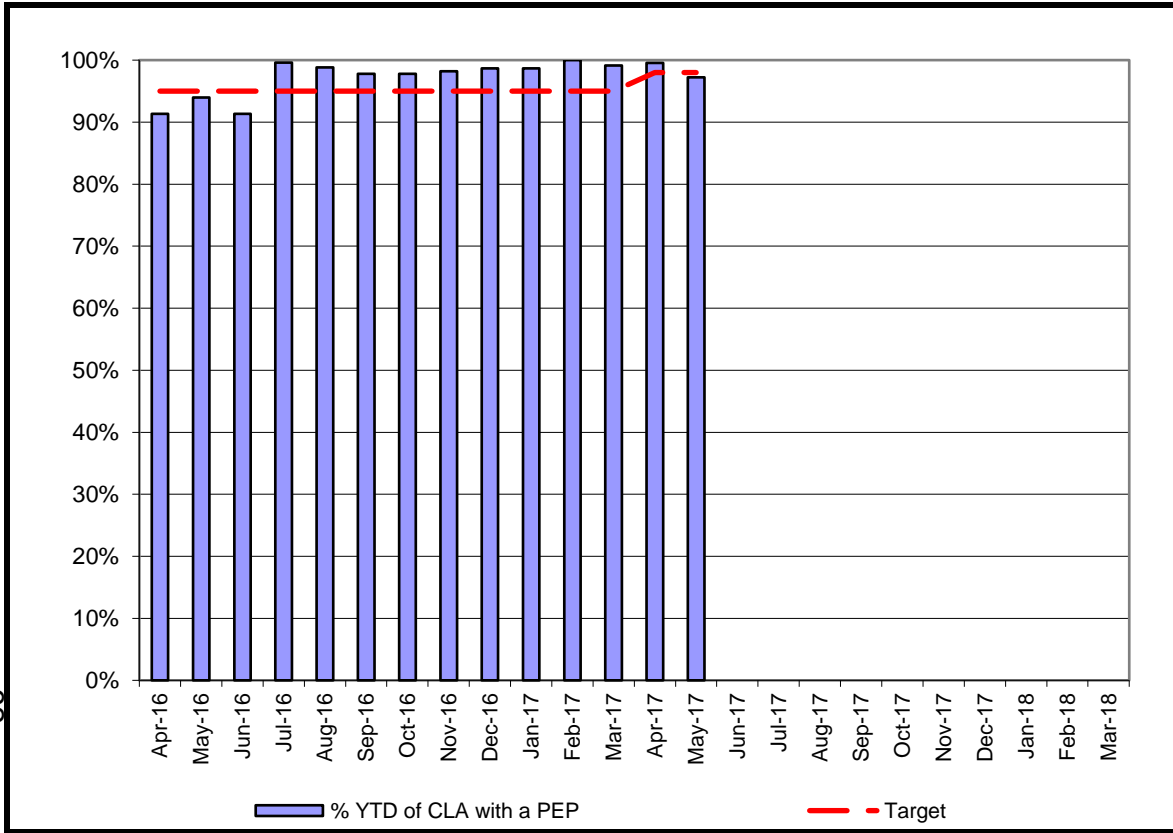
CSC Commentary

This performance indicator May has seen a reduction in dental checks (20) being completed by month end, but further work is being undertaken with health colleagues to address this area. We will have a revised procedure to address this by the end of June

Definition

The percentage of children looked after who have had a dental check within the previous 12 months. Children looked after aged between 3 and 17 years old that have a dental check recorded on Liquidlogic that was completed within the previous 12 months. The denominator is the number of children looked after (3 - 17) at the month end.

G >= 95%	A > 90%	R < 90%
----------	---------	---------



Month	Num.	Denom.	% YTD	Target	Variance	RAG
Apr-16	222	243	91.4%	95.0%	-3.6	G
May-16	233	248	94.0%	95.0%	-1.0	G
Jun-16	232	254	91.3%	95.0%	-3.7	G
Jul-16	253	254	99.6%	95.0%	4.6	R
Aug-16	250	253	98.8%	95.0%	3.8	A
Sep-16	219	224	97.8%	95.0%	2.8	A
Oct-16	219	224	97.8%	95.0%	2.8	G
Nov-16	218	222	98.2%	95.0%	3.2	G
Dec-16	220	223	98.7%	95.0%	3.7	G
Jan-17	220	223	98.7%	95.0%	3.7	G
Feb-17	221	221	100.0%	95.0%	5.0	A
Mar-17	233	235	99.1%	95.0%	4.1	G
Apr-17	209	210	99.5%	98.0%	1.5	G
May-17	212	218	97.2%	98.0%	-0.8	A
Jun-17						
Jul-17						
Aug-17						
Sep-17						
Oct-17						
Nov-17						
Dec-17						
Jan-18						
Feb-18						
Mar-18						

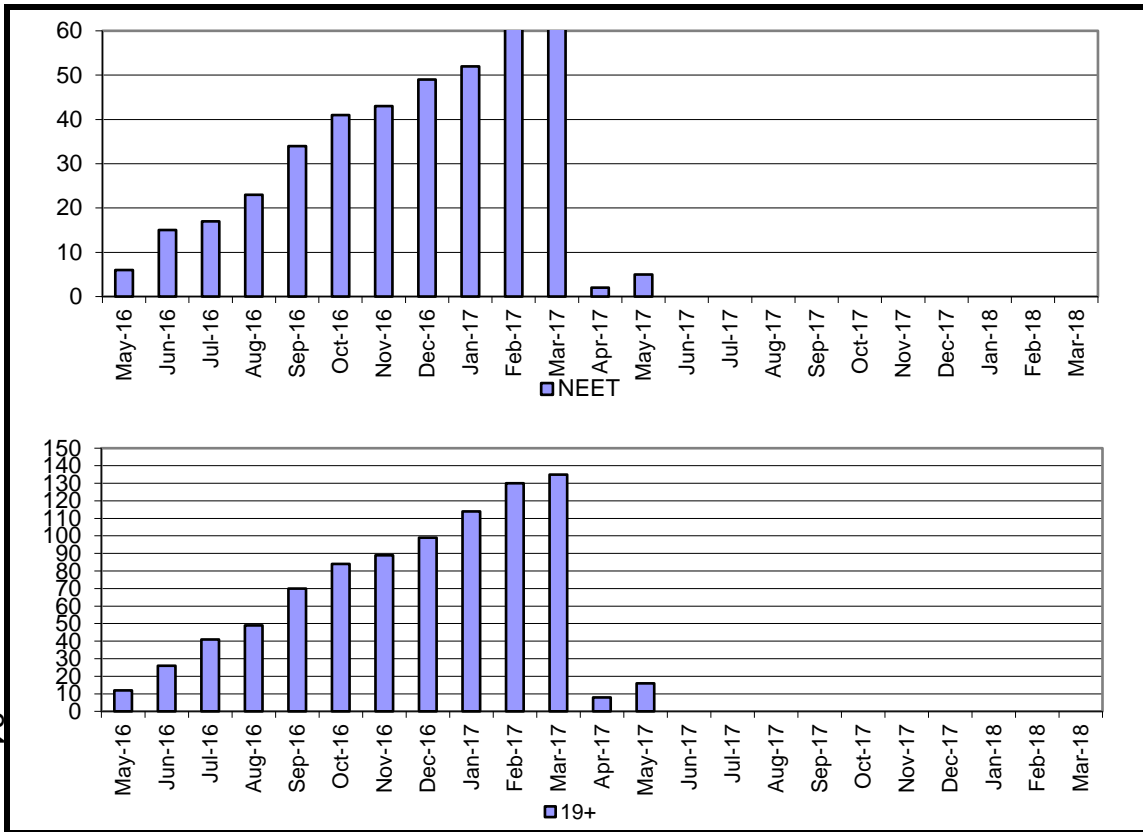
CSC Commentary

Compliance has slipped in May; this is due to recording not being completed by workers and availability for attendance at PEPs due to half term.

Definition

The denominator is the number of children in care who are of school age. The numerator is of those children, the number that have a PEP added to the system. This has been addressed with managers.

G = >98%	A=95%-97%	R < 95%
----------	-----------	---------



Month	NEET	19+	%	Target	Variance	RAG
Apr-16	3	6	50.0%			
May-16	6	12	50.0%			
Jun-16	15	26	57.7%			
Jul-16	17	41	41.5%			
Aug-16	23	49	46.9%			
Sep-16	34	70	48.6%			
Oct-16	41	84	48.8%			
Nov-16	43	89	48.3%			
Dec-16	49	99	49.5%			
Jan-17	52	114	45.6%			
Feb-17	61	130	46.9%			
Mar-17	63	135	46.7%			
Apr-17	2	8	25.0%	30.0%		G
May-17	5	16	31.3%	30.0%		A
Jun-17						
Jul-17						
Aug-17						
Sep-17						
Oct-17						
Nov-17						
Dec-17						
Jan-18						
Feb-18						
Mar-18						

YTD	7	24	29.2%

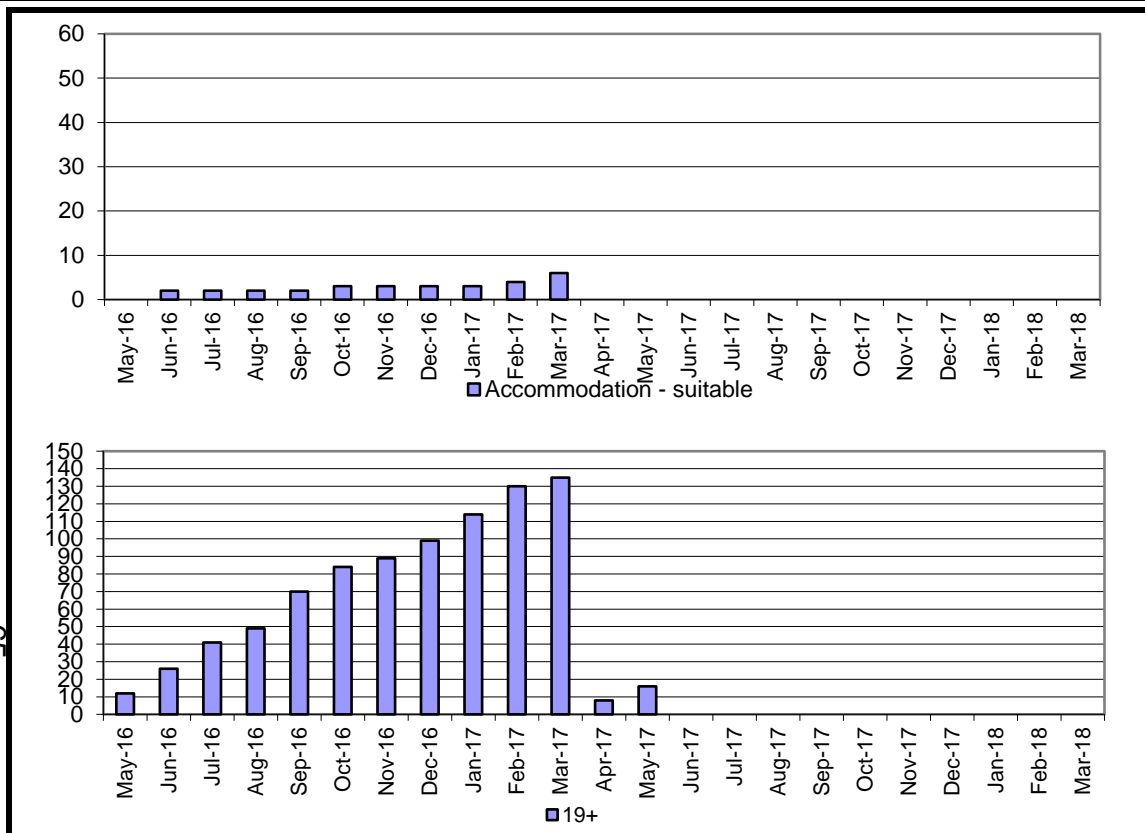
CSC Commentary

This is a cumulative data set and for May, a RAG rating has been given to this indicator.

Definition Former relevant care leavers open to the service aged 19, 20 or 21 and the proportion of those who declared themselves to be Not in Education Employment or Training

G <=30%	A =31-36%	R =>37%
---------	-----------	---------

Year	ER Result	SN Res	ENG Result
2013-14		-	-
2014-15		-	-
2015-16		-	-



Month	Accomm	19+	%	Target	Variance	RAG
Apr-16	0	6	0.0%			
May-16	0	12	0.0%			
Jun-16	2	26	7.7%			
Jul-16	2	41	4.9%			
Aug-16	2	49	4.1%			
Sep-16	2	70	2.9%			
Oct-16	3	84	3.6%			
Nov-16	3	89	3.4%			
Dec-16	3	99	3.0%			
Jan-17	3	114	2.6%			
Feb-17	4	130	3.1%			
Mar-17	6	135	4.4%			
Apr-17	0	8	0.0%	5.0%		G
May-17	0	16	0.0%	5.0%		G
Jun-17						
Jul-17						
Aug-17						
Sep-17						
Oct-17						
Nov-17						
Dec-17						
Jan-18						
Feb-18						
Mar-18						

YTD	0	24	0.0%			
-----	---	----	------	--	--	--

This cohort includes those in custody and those who are of no fixed abode. Issues have been identified for those who have refused the option of supported accommodation and those who have been evicted from previous accommodation. Work is being undertaken to develop closer joint planning with our housing department to ensure all options have been considered.

Definition
Former relevant care leavers open to the service aged 19, 20 or 21 and the proportion of those who declared themselves to be Not in Suitable Accommodation

G =0-5% **A =6-7%** **R >7%**

Year	ER Result	SN Res	ENG Result
2013-14		-	-
2014-15		-	-
2015-16		-	-

Jun-16	Sep-16	Dec-16	Mar-17	May-17
--------	--------	--------	--------	--------

Children looked after	371	366	364	363	362
-----------------------	-----	-----	-----	-----	-----

Age

Under 1	22	21	16	18	20
1 to 4	36	36	38	34	27
5 to 9	81	71	71	69	68
10 to 15	149	141	137	137	145
16-17	82	96	101	105	101
18 or over	1	1	1	0	1

Gender

Male	211	206	206	199	199
Female	160	160	158	164	163

Legal Status

Interim care orders	60	51	45	50	58
Full care orders	163	167	174	181	180
Voluntary agreements	107	105	103	94	88
Freed adoption / placement order	37	40	40	36	33
Others	4	3	2	2	3

Placement

Foster carers - In House	173	164	167	176	164
Foster carers - Agency	108	109	106	97	108
Foster carers - Unknown	0	0	0	0	0
Fostering by relatives or friends	19	16	18	17	15
With parents	4	2	2	3	1
Independent living	31	29	28	23	25
Residential care homes	30	36	36	41	42
Other residential schools	2	3	3	3	1
Placed for adoption	3	6	4	3	5
Secure unit	0	1	0	0	1
Other	1	0	0	0	0

Jun-16	Sep-16	Dec-16	Mar-17	May-17
--------	--------	--------	--------	--------

Children looked after	371	366	364	363	362
-----------------------	-----	-----	-----	-----	-----

Ethnicity

White British	235	239	237	227	221
White Irish	0	0	0	0	0
White Other	47	38	37	40	47
White	282	277	274	267	268
Mixed White & Black Caribbean	4	5	5	6	5
Mixed White & Black African	6	6	5	5	5
Mixed White & Asian	14	15	18	19	18
Any other mixed background	11	10	14	13	12
Mixed	35	36	42	43	40
Indian	0	0	1	1	1
Pakistani	5	4	3	7	6
Bangladeshi	0	0	0	0	0
Any other Asian background	18	18	18	18	16
Asian	23	22	22	26	23
Caribbean	2	2	1	1	1
African	12	10	10	9	11
Any other Black background	7	7	8	8	8
Black	21	19	19	18	20
Chinese	0	0	0	0	0
Any other ethnic group	10	8	4	5	6
Other	10	8	4	5	6
Not stated / not yet obtained	0	4	3	4	5

Length of time in care

0 - 6 months	102	76	69	67	71
7 - 12 months	51	58	56	44	39
1 - 2 years	60	81	85	98	92
3 - 5 years	72	54	50	45	54
6 - 10 years	72	84	90	92	90
11 -15 years	14	13	14	17	16
16+ years	0	0	0	0	0